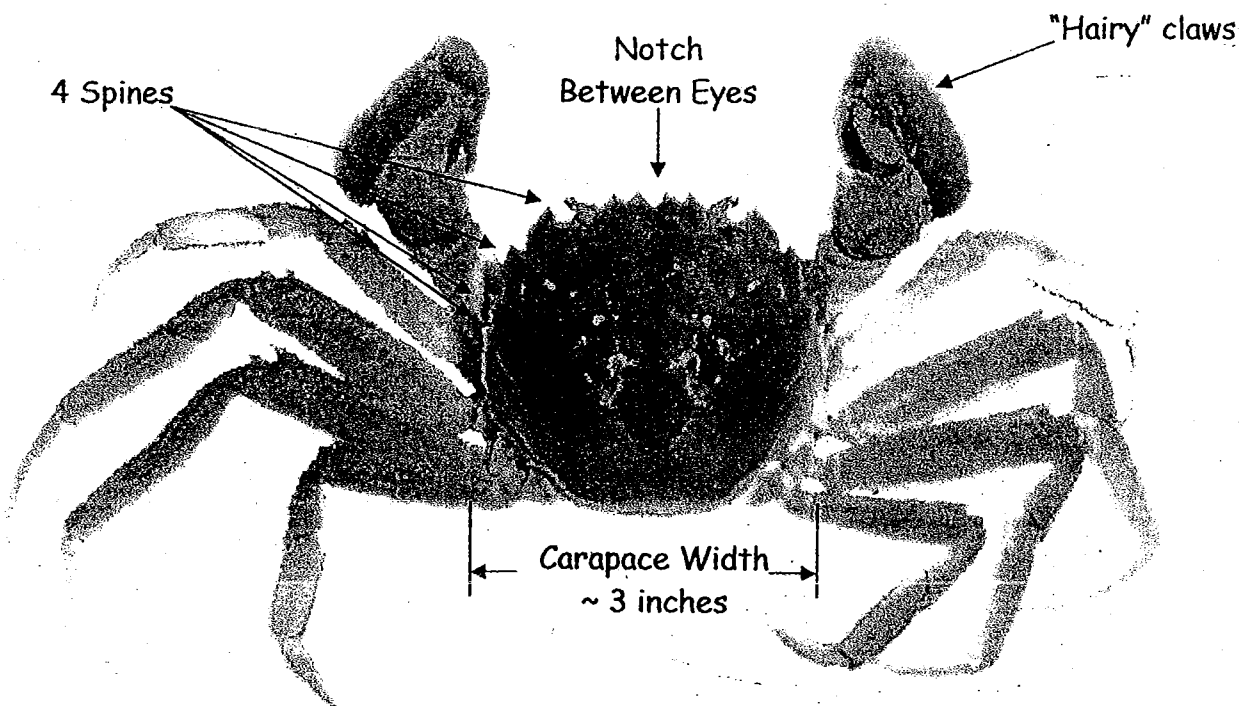


# WANTED

---



---

## DEAD or ALIVE MITTEN CRAB

A NON-NATIVE SPECIES ON THE EAST COAST

This crab has recently been found in the Chesapeake Bay, Delaware Bay, Hudson River and most recently New Jersey.

It may damage native species and habitat. Help track and document its spread and impact.  
Distinguishing characteristics are its large, "hairy" claws and presence in freshwater.

If you find one of these crabs, please call the  
Mitten Crab Hotline: 1-443-482-2222  
Or email a picture to  
[SERCMittenCrab@si.edu](mailto:SERCMittenCrab@si.edu)

*For additional information on Mitten crabs contact:  
Smithsonian Environmental Research Center •  
[www.serc.si.edu/labs/marine\\_invasions](http://www.serc.si.edu/labs/marine_invasions)  
in cooperation with*

*Maryland Department of Natural Resources • US Fish and Wildlife Service • NOAA • Mid Atlantic Panel on Aquatic Invasive Species*